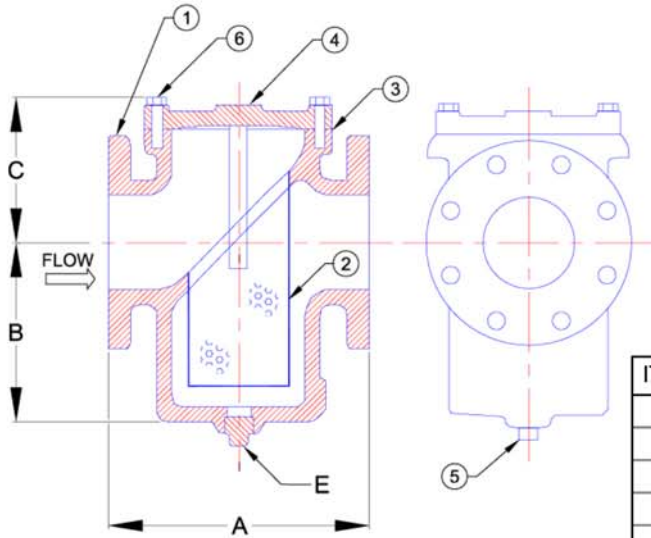


STAYFLOW STRAINERS

BIF

BASKET STRAINER, 125# FLANGES CAST IRON (ASTM A 126 CLASS B)



STANDARD SCREENS

SIZE (in)	SCREEN PERFORATION	
	LIQUID	
	(in)	OPEN AREA
2 to 3	3/64	33%
4 to 16	1/8	43%

The default standard screens are for liquid service unless specified. Many other options are available.

PARTS LIST

ITEM	DESCRIPTION	MATERIAL
1	BODY	CAST IRON (ASTM A 126 CLASS B)
2	SCREEN (BASKET)	STAINLESS STEEL (304)
3	GASKET	FIBER COMPOSITE
4	COVER	CAST IRON (ASTMA A 126 CLASS B)
5	PIPE PLUG	MALLEABLE IRON
6	HEX HEAD CAP	STEEL



DIMENSIONS & WEIGHT

SIZE (in)	A (in)	B (in)	C (in)	E (in)	WT (lbs)
2	8	5	3 3/8	3/4	22
2-1/2	8-1/4	6	3 5/8	3/4	34
3	9-3/4	7 1/8	4 1/8	3/4	42
4	11-1/2	8 3/4	4-3/4	1	70
5	13-1/8	8 3/4	5 7/8	1	90
6	14-3/4	9 3/8	6-1/4	1 1/4	124
8	18-1/2	11 3/4	8 7/8	3/4	270
10	20-1/8	13 3/4	10-3/4	3/4	384
12	26-1/4	16 3/8	13 3/8	1	670
14	30-1/4	22 9/32	14 1/16	1 1/2	1025
16	33-1/8	23 7/32	15 1/16	1 1/2	1350

FLOW COEFFICIENTS

SIZE (in)	Cv	SIZE (in)	Cv
2	43	8	1486
2-1/2	78	10	3052
3	120	12	4981
4	277	14	7985
5	443	16	9655
6	743		

PRESSURE VS. TEMPERATURE

